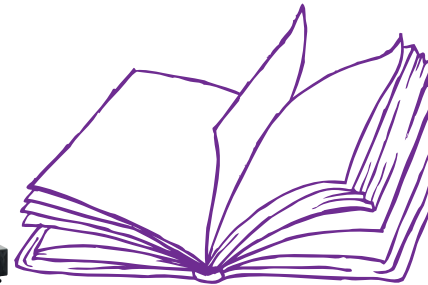




Ref. 3009



Ref. 3001



Ref. 3052 and Ref. 3051



Ref. 15291



Ref. 3020



Ref. 5104-PA

Shelving structure

2 mm thick metal tube 60 x 30 mm, epoxy finish. Holes every 15 mm to adjust the shelves. Adjustable feet under the structure.

Single-sided starter unit :

Single-sided starter unit, 120 cm high ...> **Ref. 3001**

Single-sided starter unit, 160 cm high ...> **Ref. 3003**

Single-sided starter unit, 180 cm high ...> **Ref. 3025**

Single-sided add-on unit :

Single-sided add-on unit, 120 cm high ...> **Ref. 3002**

Single-sided add-on unit, 160 cm high ...> **Ref. 3004**

Single-sided add-on unit, 180 cm high ...> **Ref. 3026**

Double-sided starter unit :

Double-sided starter unit, 120 cm high ...> **Ref. 3007**

Double-sided starter unit, 160 cm high ...> **Ref. 3009**

Double-sided starter unit, 180 cm high ...> **Ref. 3027**

Double-sided add-on unit :

Double-sided add-on unit, 120 cm high ...> **Ref. 3008**

Double-sided add-on unit, 160 cm high ...> **Ref. 3010**

Double-sided add-on unit, 180 cm high ...> **Ref. 3028**

More heights available on demand.

Straight shelf

1 mm thick metal shelf, epoxy finish. 30 mm high back piece. The shelf is sold with right and left stops.

> **Ref. 3051**

Sloping shelf

1 mm thick metal shelf, epoxy finish. 30 mm high front piece. The shelf is sold with right and left stops.

> **Ref. 3052**



Ref. 3053-51



Ref. 3054-51



Ref. 15455

Front sign

1 mm thick metal panel, 780 x 70 mm. Overall height 286 mm.

> **Ref. 3024**

Book support

1 mm thick metal book support to put on the shelf.

> **Ref. 15291**

Periodicals storage unit

Made up of 3 separate metal boxes with metal blinds for display.

LHD : 900 x 400 x 410 mm

> **Ref. 3020**

Built-in comics rack

19 mm thick melamine rack with 2 mm ABS edges. Sold with a grey non-slip mat and with right and left rack support.

LHD : 900 x 300 x 300 mm

> **Ref. 5104-PA**

Kinderboxes

19 mm thick melamine rack with 2 mm ABS edges. Sold with a grey non-slip mat. Metal base 60 x 30 mm with adjustable feet, epoxy finish.

6 bay Kinderbox

Capacity of 150 books.

LHD 960 x 510 x 600 mm > **Ref. 3053-51**

4 bay Kinderbox

Capacity of 100 books.

LHD 660 x 510 x 600 mm > **Ref. 3054-51**

Set of 4 castors

ø 50 mm > **Ref. 3050-00**

Mobile low Kinderbox

Metal Kinderbox sold with a grey non-slip mat, with 4 castors Ø50 mm (2 with brakes) and with plexiglas dividers to adjust the box size.

Width 60 cm (4 bay Kinderbox) > **Ref. 15455**

Width 90 cm (6 bay Kinderbox) > **Ref. 15456**

